



THE ALPINE RIDGE



THE ALPINE RIDGE Model number: 37FAC16763DH19

3 beds • 2 baths • 1280 sq.ft. • 16' width • 80' depth

Our home building facilities invest in continuous product and process improvements. Plans, dimensions, features, materials, specifications and availability are subject to change without notice or obligation. Renderings and floor plans are representative likenesses of our homes and may differ from the actual homes. We invite you to tour a Home Center near you and inspect the highest value in quality housing available or call (985) 449-0066 to speak with a Home Consultant. Copyright 2017, CMH. All rights reserved.

<https://www.claytonthibodaux.com>

CLAYTON HOMES-
THIBODAU

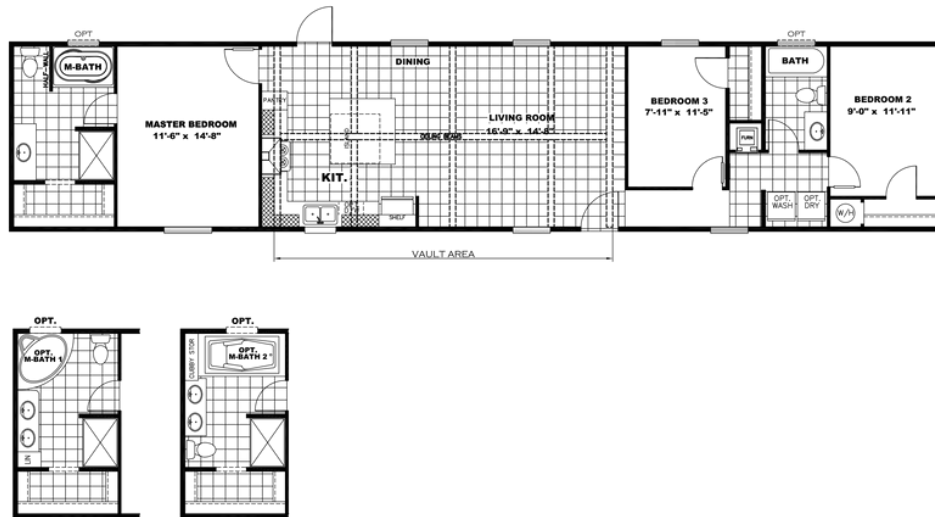
134 W. MAIN STREET
THIBODAU, LA 70301

Monday - Thursday: 9am - 7pm
Friday: 9am - 6pm
Saturday: 9am - 5pm
Sunday: Closed

(985) 449-0066



THE ALPINE RIDGE



THE ALPINE RIDGE Model number: 37FAC16763DH19

3 beds • 2 baths • 1280 sq.ft. • 16' width • 80' depth

Our home building facilities invest in continuous product and process improvements. Plans, dimensions, features, materials, specifications and availability are subject to change without notice or obligation. Renderings and floor plans are representative likenesses of our homes and may differ from the actual homes. We invite you to tour a Home Center near you and inspect the highest value in quality housing available or call (985) 449-0066 to speak with a Home Consultant. Copyright 2017, CMH. All rights reserved.

<https://www.claytonthibodaux.com>

CLAYTON HOMES-
THIBODAUX

134 W. MAIN STREET
THIBODAUX, LA 70301

Monday - Thursday: 9am - 7pm
Friday: 9am - 6pm
Saturday: 9am - 5pm
Sunday: Closed

(985) 449-0066